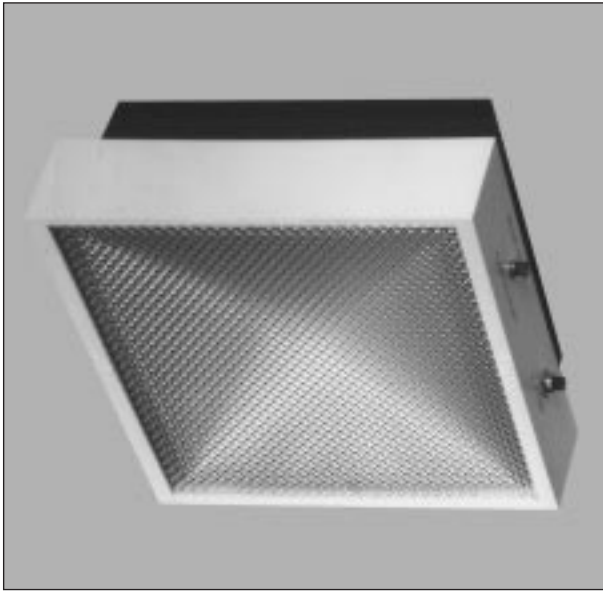


Type No. \_\_\_\_\_  
Job Name \_\_\_\_\_  
Catalog No. \_\_\_\_\_



**Shown: S201N**



## Housing

- UL 94 V-0, 5 VA impact resistant thermoplastic housing and backbox
- Unit may be surface, semi- or fully recessed mounted and may be mounted to any standard junction box
- Matte white housing with black backbox
- Optional semi-recessed box is 22 gauge steel
- Acrylic lens standard; shatter resistant polycarbonate lens optional

## Battery

- The S201N and S300N use maintenance free, nickel cadmium batteries
- Nickel cadmium batteries are recommended for semi- or fully recessed versions and high ambient temperature areas
- Nickel cadmium battery has an expected service life of 10 years with an operating range of 20°F (-7°C) to 95°F (35°C)\*
- The S201L uses a maintenance free, sealed lead calcium battery
- Lead calcium battery has an expected service life of 5 years with an operating range of 65°F (19°C) to 85°F (30°C)\*

\* Increases or decreases in temperature will affect battery performance and/or capacity. Optimum battery performance realized at 77°F (25°C).

# Super Square II Series

- **Surface, Semi, and Fully Recessed Emergency**
- **Maintenance Free, Sealed Lead Calcium or Nickel Cadmium Battery**

## Electronics

- 120/277 VAC dual voltage input capability
- Lead calcium units utilize a solid-state, fully automatic, voltage regulated charger
- Nickel cadmium units utilize a solid-state, constant voltage charger
- Includes low voltage disconnect (LVD), brownout protection, and AC lockout installation features
- All units are provided with high output halogen lamps
- Master unit/remote capability with S300N
- Test switch and AC indicator light
- Emergency operation provides a minimum of 90 minutes of illumination

## Power Consumption

120 VAC - 0.096 amps, 10 watts

277 VAC - 0.04 amps, 10 watts

## Code Compliance

- UL 924 listed
- NFPA 101
- NEC, BOCA and OSHA illumination standard

## Application

- Ideal for commercial locations where low profile emergency lighting that blends with the building decor is desired

## Warranty

Electronics: 3 years

Battery: 1 year full, 4 years pro-rata (lead calcium)

5 years full, 5 years pro-rata (nickel cadmium)

# Super Square II Series

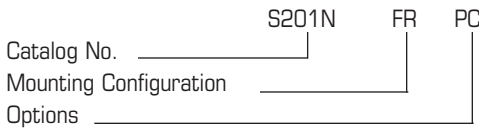
## Ordering Information

EMERGENCY UNIT 6 VOLT	CATALOG NUMBER	MOUNTING CONFIGURATION	WATTS TO 87 ½% OF RATED VOLTAGE <sup>2</sup>				LAMP WATTAGE
			12.0	9.0	—	—	
Sealed Nickel Cadmium <sup>1</sup>	<b>S201N</b>	<b>Blank</b> = Surface Mount <b>FR</b> = Fully Recessed	12.0	9.0	—	—	12
	<b>S300N</b>		26.0	19.5	12.5	—	7
Sealed Lead Calcium	<b>S201L</b>		12.0	9.0	—	—	7
REMOTE UNITS	CATALOG NUMBER	MOUNTING CONFIGURATION	WATTS TO 87 ½% OF RATED VOLTAGE				LAMP WATTAGE
6 Volt	<b>S400B</b>	<b>Blank</b> = Surface Mount <b>FR</b> = Fully Recessed	Determined by				7
12 Volt	<b>S400C</b>		Master Unit				7

**NOTES:**

1) Nickel cadmium units are recommended for recessed applications

## Ordering Example



## Options

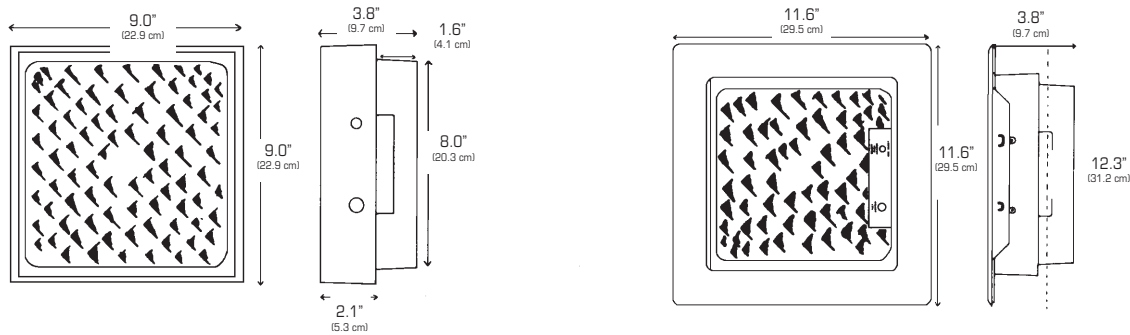
- V** Voltmeter
- PC** Polycarbonate Lens

## Accessories

**(Ordered Separately)**

- SRK1** Semi-recessed Kit
- WG3** Wire Guard
- WG4** Wire Guard for fully recessed unit

## Dimensions



## Suggested Specification

Furnish and install Lightguard's self-contained emergency lighting model \_\_\_\_\_. The emergency lighting unit shall be listed to Underwriters Laboratories, Inc. Standard #924 and shall meet the standards of the National Electrical Code.

The S201N and S201L shall be self-contained units with 90 minutes of emergency backup operation. The S300N shall be capable of powering 6 volt remote fixtures (i.e. S400B, remote 6 volt lamp heads and exit signs) for 90 minutes in emergency mode to meet UL standards.

**OPERATION** - Upon failure or brownout of utility power, the units shall automatically transfer to battery power and maintain the required illumination for a period of 90 minutes. Upon restoration of utility power, the charger shall restore the battery to full charge per UL 924 standard requirements.

**CHARGER** - Nickel cadmium units shall be equipped with a solid-state constant voltage charger. Sealed lead calcium battery units shall be equipped with a solid-state, fully automatic constant voltage charger

**BATTERY** - The battery used with S201N and S300N shall be maintenance free, sealed nickel cadmium. S201L shall use a maintenance free, sealed lead calcium battery.

**HOUSING** - The housing shall be lightweight, UL 94 V-0, 5 VA impact resistant thermoplastic. Lens shall be high impact acrylic or polycarbonate.

**ILLUMINATION** - The Super Square II Series shall use halogen lamps with a reflector lens system to provide a 172° beam spread.

**STANDARD CONTROLS** - Shall include an AC indicator light and a press-to-test switch which simulates a power failure.